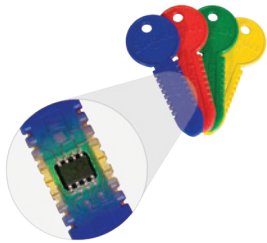




**SIMPLE. POWERFUL.
AFFORDABLE.**

Stand-alone, non-networked access control system

- Control, update and know who has access to secure areas
- Manage multiple access points and locations from one computer—without a network
- Allow or deny entry based on individual, access point, day, time, group, and more
- Monitor and track usage with audit trail information stored on controllers and user keys



Electronic keys

Instead of using a widespread security code, a fragile card, or an easily copied mechanical key, Guardian II users carry a rugged, encrypted memory key. The durable keys are intuitive to use and fit on a keychain, so they are not easily lost and are field-proven to operate reliably for years in the harshest environments.



Controllers

When an authorized user key is accepted, the controller activates a timed relay contact that powers an electric strike, magnetic lock, or other mechanism. Controller settings are transferred from the PC to each controller using an admin key. Logged events are downloaded from each controller, back to the PC, using an export key (no need to carry a laptop or PDA to the controller).



Programmer and software

Easy-to-use Windows® software lets administrators manage access rights for all users and monitor usage. Keys are programmed with the G2 programmer, which is connected to the administrator's PC via a standard USB cable (no network required).



Windows is a registered trademark of Microsoft Corporation in the United States and other countries.



Commercial Facilities



Marina Gates

Applications:

- Facility doors
- Marina gates
- Stock rooms
- Tool cribs
- Network rooms
- Document rooms
- Exercise rooms
- Shared facilities
- Rental properties
- Executive offices
- Pools
- Remote buildings



Executive Offices

SIMPLE. POWERFUL. AFFORDABLE.

Simple installation

Stand-alone design eliminates the hassles of networking controllers—perfect for challenging locations or remote areas.

Enhanced control

Powerful, versatile administrative tools let administrators meet the unique access-control needs of nearly any access point, facility or remote area.

Affordable

Costs for the first door, additional doors, and installation are more affordable than most other electronic access control systems.

Long-term scalability

The non-networked system design makes it easy to expand, remove or change access points using the existing software application.

Better security

Unlike traditional lock and key systems, users carry a unique, fully encrypted key that cannot be duplicated. Compared to code-based systems, security is upgraded from “what you know” to “what you own.”

Improved access monitoring

Administrators have clear insight into controller events and records, as audit trail information is easily transferred from controllers using an export key.







An “instant access” key offers a quick way to grant entry to a specified user and location—without having to first update the controller.



Lost or stolen keys can be easily blocked using the administration software—eliminating the cost of re-keying locks.

CONTROLLER MODELS

	G-50 Easily mounts into existing enclosures (1" x 1" opening)
	G-150 Fits in 2" metal door frames (1 ³ / ₄ " x 5 ¹ / ₄ " faceplate)
	G-250 Installed in single-gang electrical box (2 ³ / ₄ " x 4 ¹ / ₂ " faceplate)
	G-450 Comes in a heavy-duty aluminum enclosure for harsh or rough-use environments (3 ¹ / ₈ " x 4 ⁷ / ₈ " x 2 ¹ / ₄ ")

www.Guardian2.com
info@Guardian2.com

210 N.E. 10th Avenue
Brainerd, MN, USA 56401
Phone 800.523.6996 / 218.829.9797

CONTROLLER SPECIFICATIONS

Power requirements	9-12 volts AC* or DC (0.3 A)
Operating temperature	-40°C to 85°C (-40°F to 185°F)
Relay	(1) Form C, SPDT, 2 A @ 30 V DC
Buzzer	80 dBA
Real-time clock battery	Field replaceable
Logged event capacity	1,500 records (average)
Electric strike/magnetic lock	Sold separately

*Maximum AC input voltage 12 V_{RMS}

GETTING STARTED

Administration kit—only one required per location:

- Software and G2 programmer
- Admin and export keys
- Five user keys

Controllers—one per access point

User keys—one per active user

