



KC4210 Panel Mounting Instructions

1. Panel Cutout

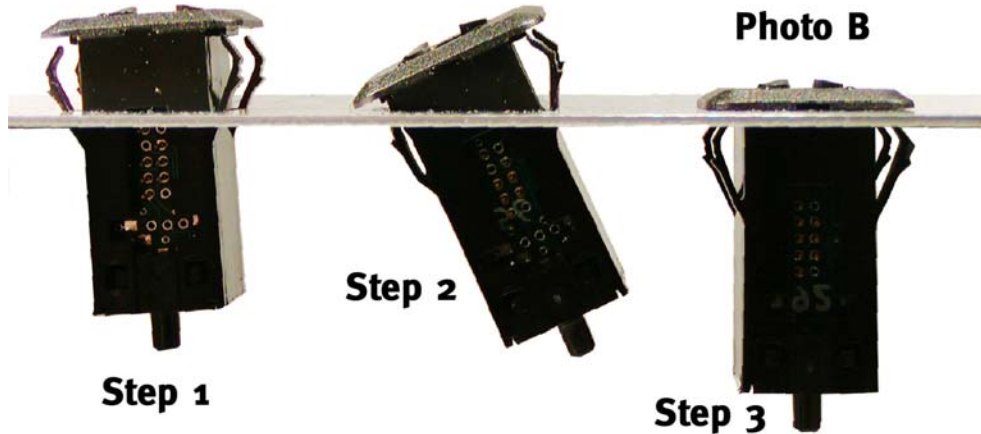
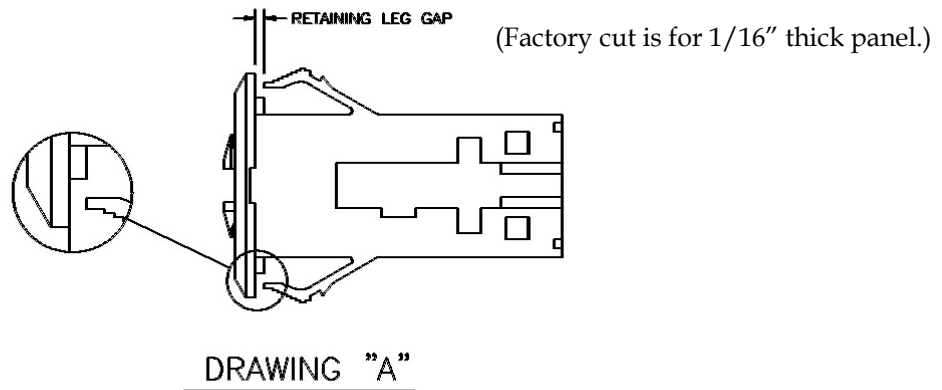
These instructions are for a standard 1" $+0.015$ -0.0 " ± 0.4 mm square panel opening. $+0.25$ mm -0.0 mm

2. Retaining Leg Gap

The housing retaining legs are trimmed at the factory for a 1/16 inch (1.58mm) thick panel. For thicker panels the retaining legs of the Keyceptacle® housing should be trimmed back to yield a gap which is 80%-85% of the panel thickness. See **Drawing A**, below. The legs should never be trimmed back more than the panel thickness.

3. Keyceptacle® Insertion

To avoid retaining leg breakage the Keyceptacle should be inserted into the panel one side at a time, as illustrated in **Photo B**, below. Using this technique avoids collapsing the legs down to the housing body. **CAUTION:** A straight push into the panel collapses both sides of the retention legs down to the housing body creating excessive stress on the legs.



www.datakey.com ■ 800-328-8828 ■ 952-746-4066

